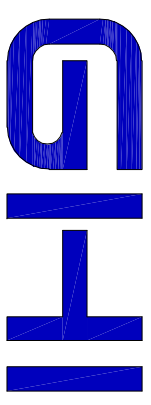


*This drawing is presented in good faith and GHI and their Associates cannot be held liable for any errors whatsoever.
*The drawing is to be checked and sizes confirmed by Client prior to any materials ordering, cutting or manufacturing.
*Site conditions will always vary per project, this a mere standard illustration, use in conjunction with applicable site sizes.



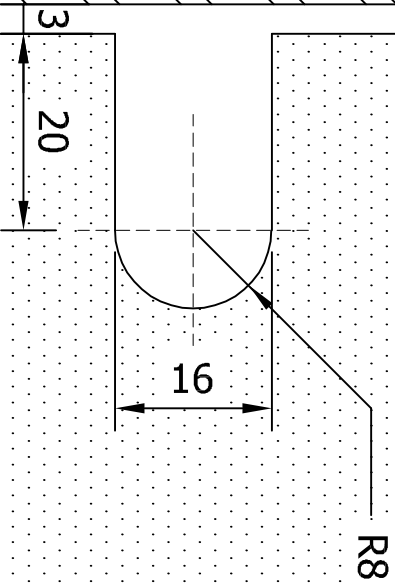
ARCHITECTURAL SOLUTIONS

phone : 0860BUYGHI

email : info@ghi.co.za

website : www.ghi.co.za

Tiled brickwork or similar, to site conditions



GLASS CUT OUT DETAILS



PHOTO INSERT

Suitable for 8mm & 10mm glass
(all glass to specification by others)

PROJECT:

FRAMELESS SHOWER FITTINGS

NOTES:

SGC265 U CONNECTOR GLASS TO WALL

DATE:

17 NOV 2022