



# Rollaway 250B

Bottom rolling sliding hardware for exterior timber doors up to 250kg.

## Features

- Quality ball-bearing rollers
- Rattle-proof guide option

## Specifications

- Max door mass: 250kg
- Max door height: 2700mm
- Max door width: 1500mm
- Door thickness: 44mm

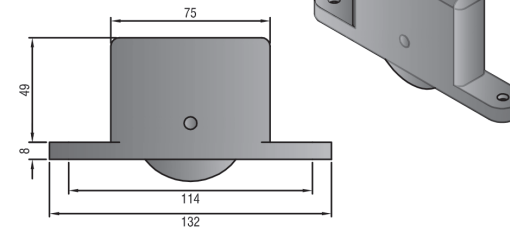
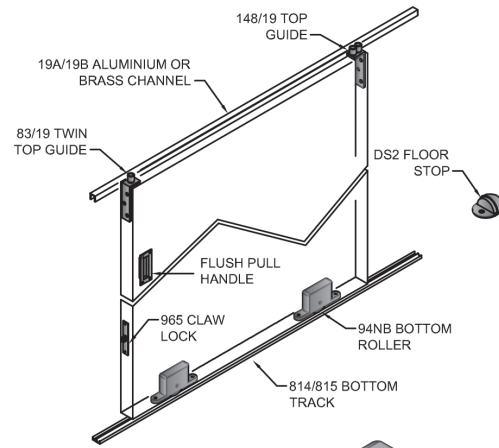
The area of a single sliding leaf should be related to all other factors.

## Components

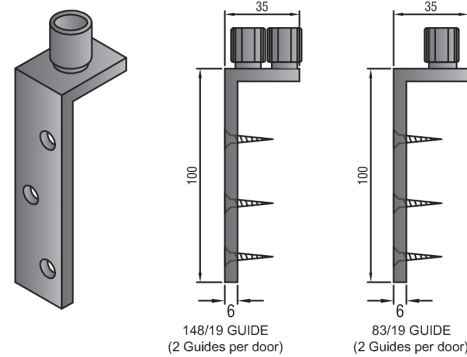
- 19A aluminium or 19B brass guide channel
- 83/19 or 148/19 top guides (rattle-proof) – gold or natural anodised
- 94NB bottom rollers
- 814B or 815B brass track
- 503NA/GA flush pull handle
- 965 mortice claw lock
- DS2 floor stop

## Note

- All fittings available in stainless steel for coastal applications.
- Various finishes available.



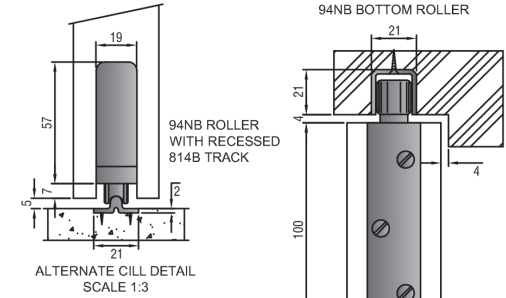
94NB MORTICE FIX ROLLER  
(2 PER DOOR)



148/19 GUIDE  
(2 Guides per door)

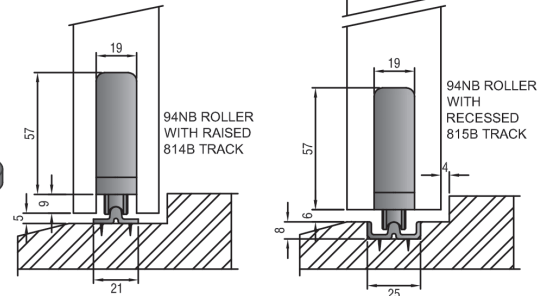
83/19 GUIDE  
(2 Guides per door)

SECTION THROUGH DOOR SHOWING 19A CHANNEL WITH 148/19 OR 83/19 GUIDE AND 815 BRASS TRACK AND 94NB BOTTOM ROLLER



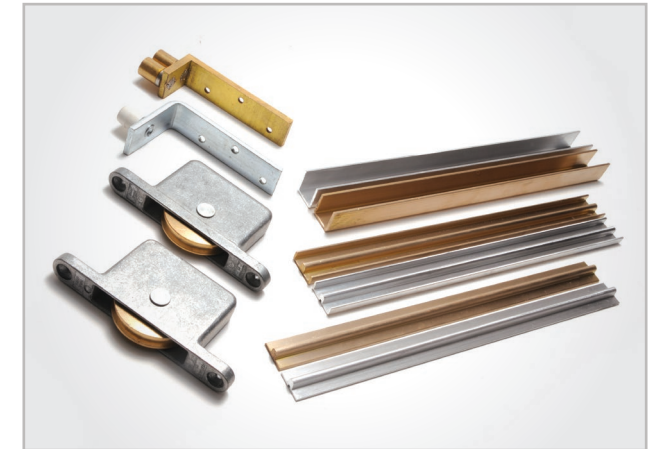
ALTERNATE CILL DETAIL SCALE 1:3

SECTION THROUGH DOOR SHOWING 814A TRACK AND 94NB BOTTOM ROLLER



ALTERNATE CILL DETAILS SCALE 1:3

## Mechanism



Brought to you by

**GHI**  
ARCHITECTURAL SOLUTIONS

info@ghi.co.za | www.ghi.co.za

**Hillaldam**  
SLIDING DOOR SYSTEMS

**Straight Sliding Door Systems**

Domestic, Commercial, Shop Fitting, Hospital, Industrial