



Rollaway 1000

Bottom rolling sliding hardware for steel and timber doors up to 1000kg.

Features

- Quality ball-bearing rollers
- Flat groove rollers for strength

Specifications

- Max door mass: 1000kg
- Max door height: 5000mm
- Max door width: 4000mm
- Door thickness: 65mm
- Max door surface area: 20 sq.m
- For exposed doors, consider wind pressure.

The area of a single sliding leaf should be related to all other factors.

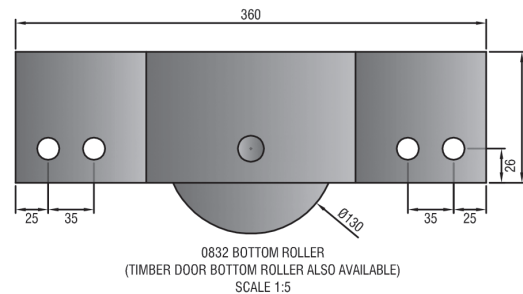
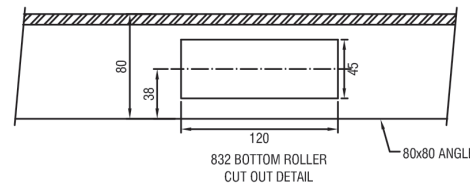
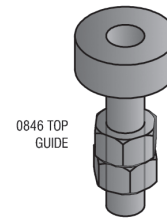
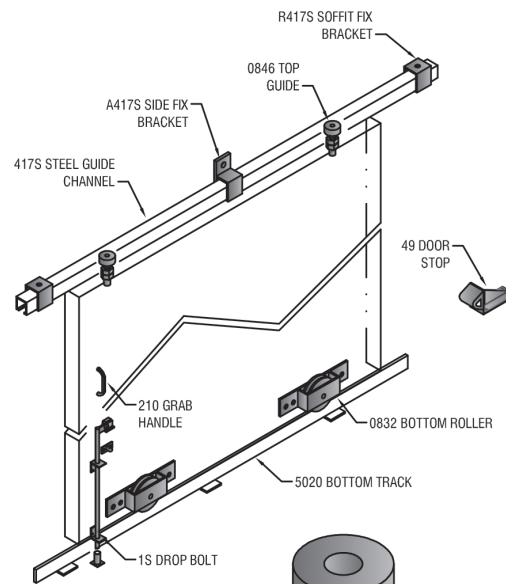
Brought to you by

GHI
ARCHITECTURAL SOLUTIONS

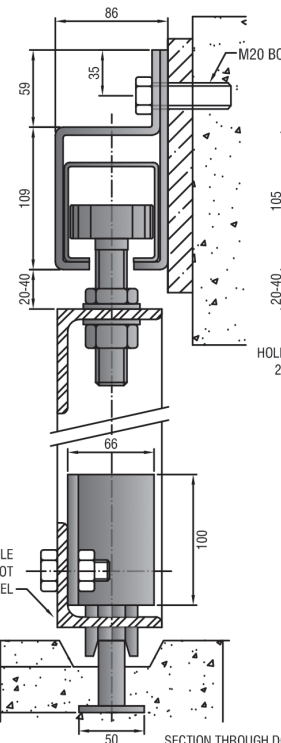
Components

- A417S (side) or R417S (top) brackets – max 900mm centres
- 417S steel guide channel
- 0846 top guide
- 0832 bottom rollers
- 5020 steel bottom track
- 1S drop bolt
- 49 door stop
- 210 grab handle

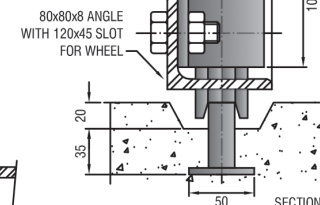
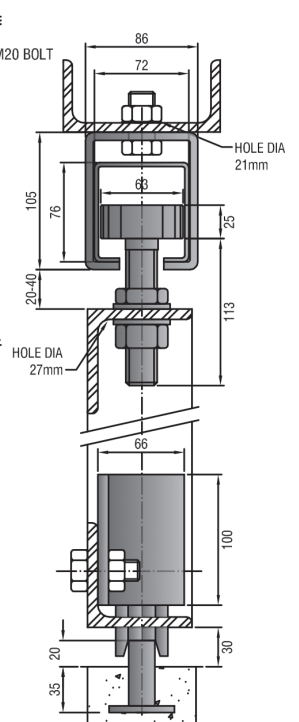
info@ghi.co.za | www.ghi.co.za



SECTION THROUGH DOOR SHOWING 417S STEEL CHANNEL WITH A417 BRACKET AND 0846 GUIDE

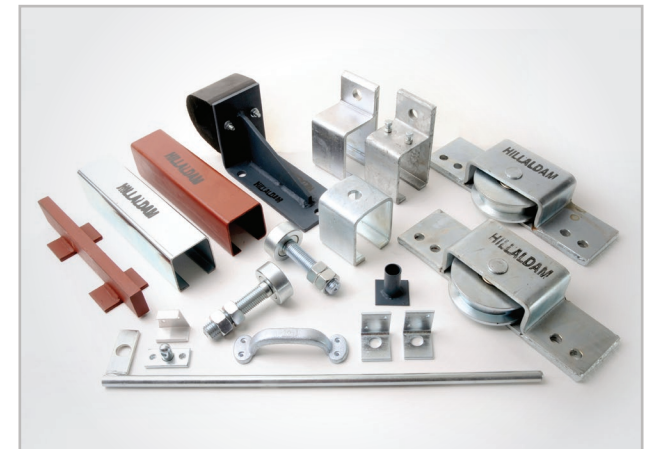


SECTION THROUGH DOOR SHOWING 417S STEEL CHANNEL WITH R417 BRACKET AND 0846 GUIDE



SECTION THROUGH DOOR SHOWING ALTERNATE CILL DETAILS OF 0832 BOTTOM ROLLER WITH RAISED AND RECESSED 5012 STEEL TRACK SCALE 1:5

Mechanism



Hillaldam
SLIDING DOOR SYSTEMS

Straight Sliding Door Systems

Domestic, Commercial, Shop Fitting, Hospital, Industrial