



# Foldaside 60GL

Top hung sliding and folding hardware for frameless interior and exterior folding doors.

## Features

- Strong aluminium top track
- Centre and end hung leaves
- Quality proven hardware

## Specifications

- Max leaf mass: 60kg
- Max leaf height: 2400mm
- Max leaf width: 800mm
- Glass thickness: 10/12mm toughened glass
- Max 6 leaves hinged together and to pivot

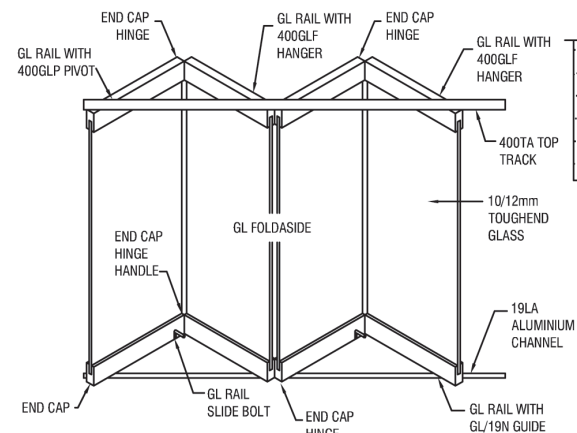
The area of a single sliding leaf should be related to all other factors.

## Components

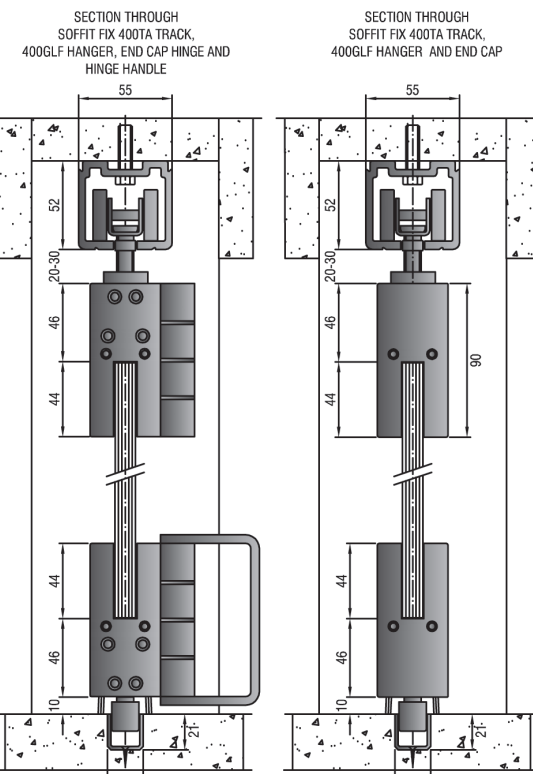
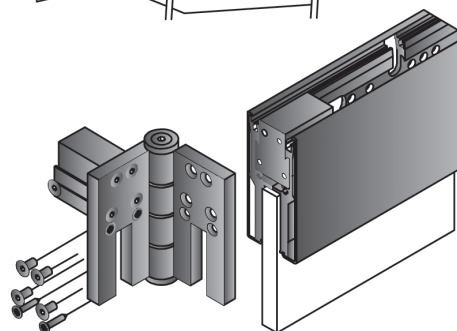
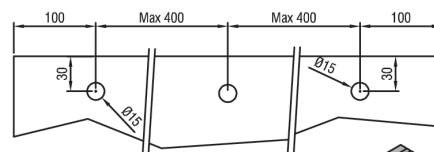
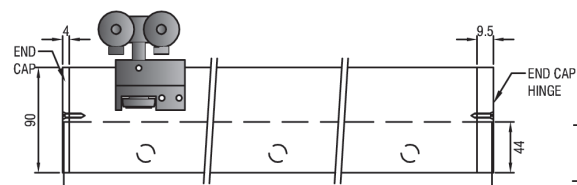
- 400TA aluminium top track
- 19A aluminium or 19B brass guide channel
- 400GLF hangers
- GL/19N guide
- 400P pivot set for pivot doors
- GL top and bottom rail with cover plates
- 5025 rail lock and euro cylinder
- 122 brush welt
- ECH end cap hinge
- ECHH end cap hinge handle
- P10/12 glass h-type seals
- GL2 slide bolt

## Note

- This system is not waterproof - only weather resistant.
- Selected fittings available in stainless steel.
- Various finishes available.



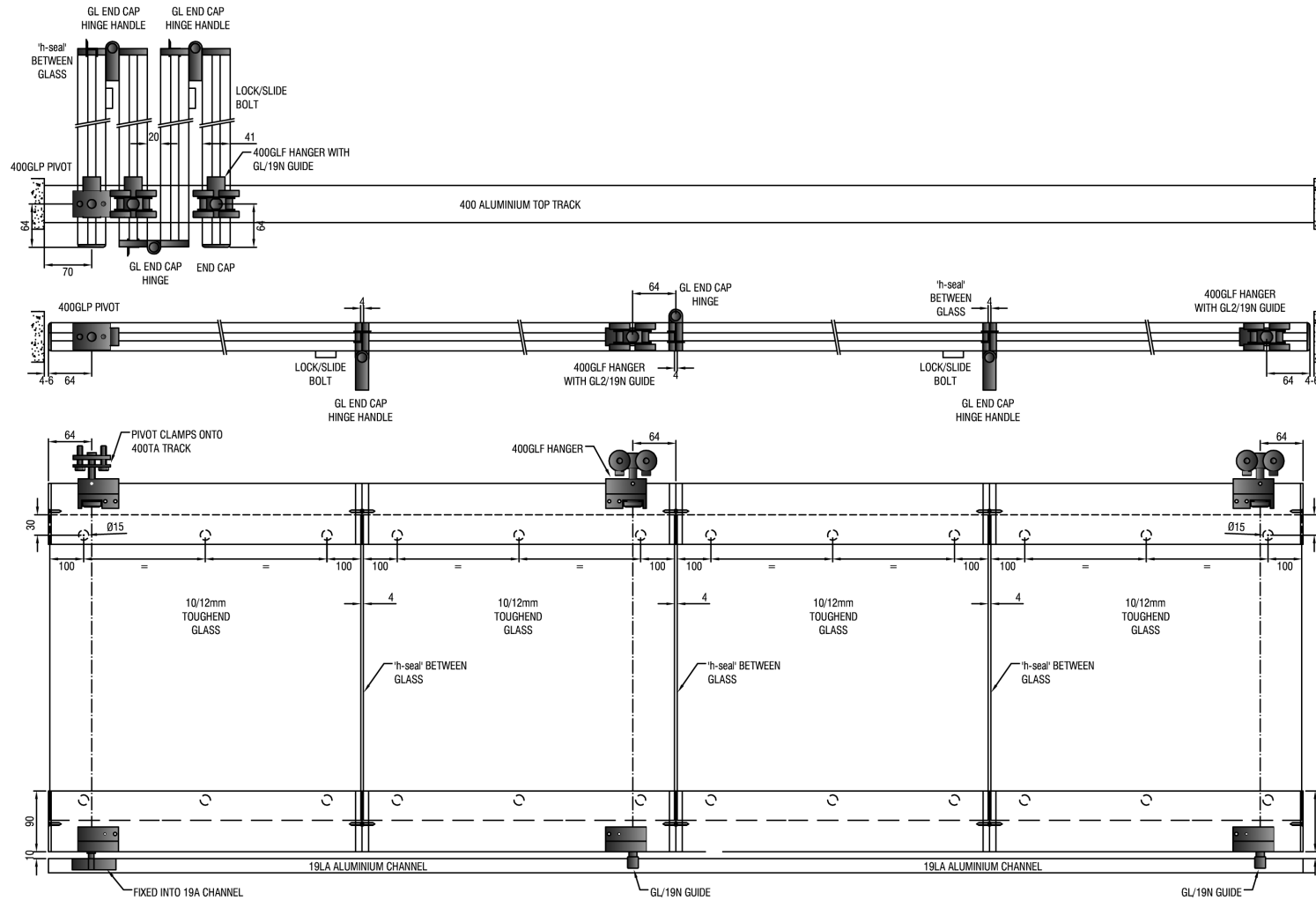
ELEVATION OF HANGER, RAIL AND GLASS CUT OUT DETAIL.



SECTION THROUGH DOORS SHOWING BOTTOM DETAIL WITH 19LA ALUMINIUM CHANNEL AND GL/19N GUIDE  
 SECTION SCALE: 1:4

## Mechanism





# Foldaside 60GL

Brought to you by  
**GHI**  
 ARCHITECTURAL SOLUTIONS

info@ghi.co.za | [www.ghi.co.za](http://www.ghi.co.za)



**Sliding / Folding Door Systems**

Domestic, Commercial, Shop Fitting, Hospital, Industrial

