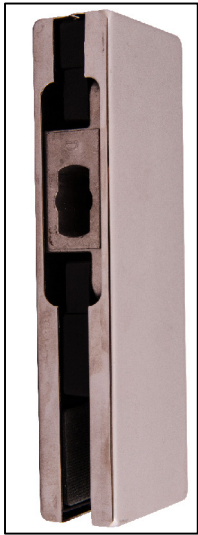


PHOTO INSERTS:



DL100

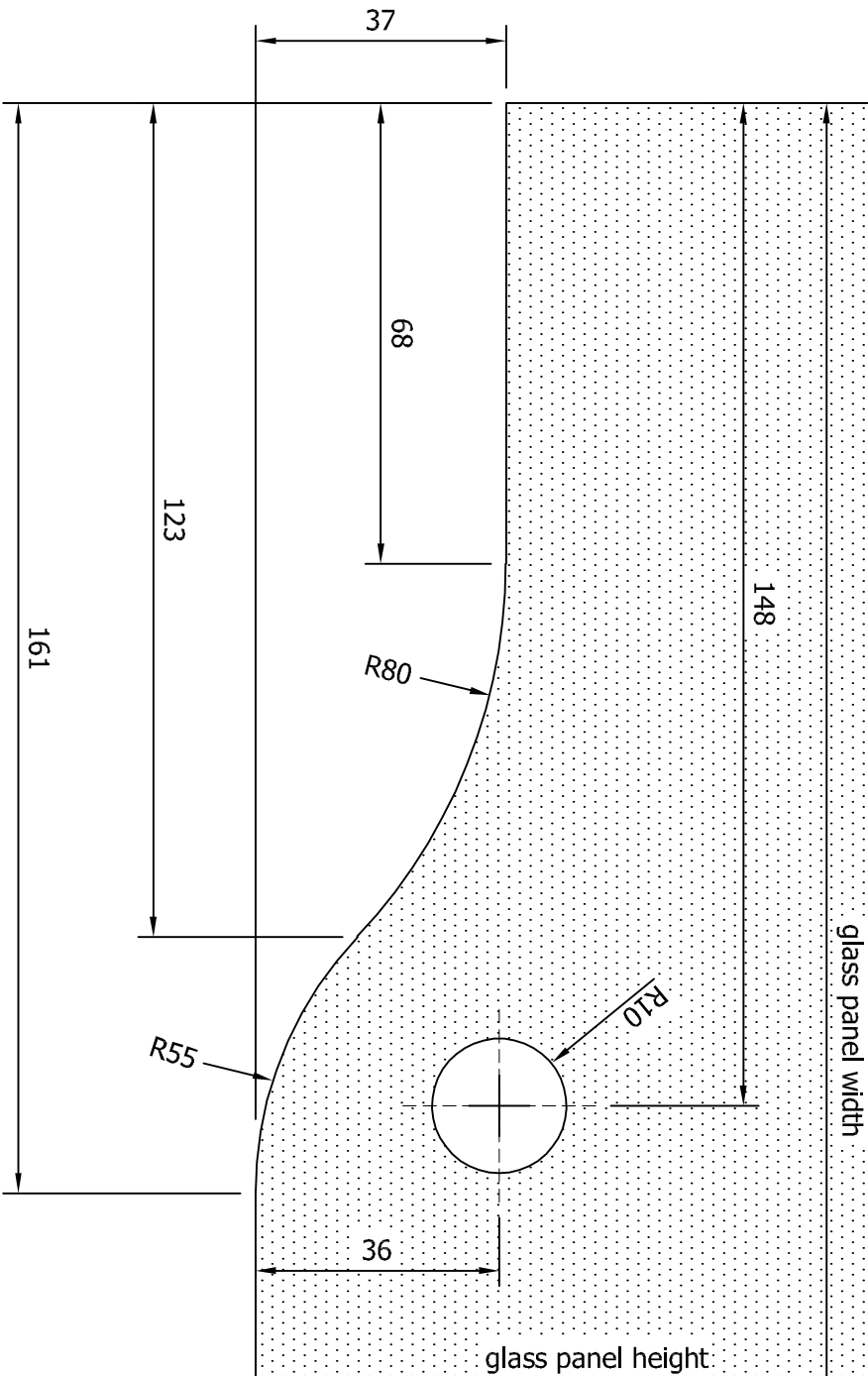


DL200



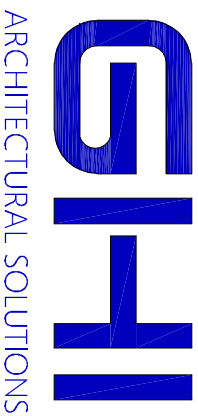
DL300

safety glass to specification by others



- NOTES:**
- 1) Suitable for 10mm to 19mm safety glass,
 - 2) 3) Satin stainless steel (SSS) or,
 - 3) Polished stainless steel (PSS)

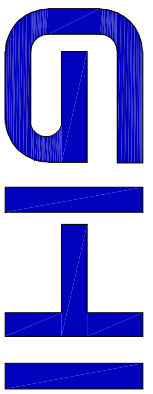
*This drawing is presented in good faith and GHI and their Associates cannot be held liable for any errors whatsoever.
 *The drawing is to be checked and sizes confirmed by Client prior to any materials ordering, cutting or manufacturing.
 *Site conditions will always vary per project, this a mere standard illustration, use in conjunction with applicable site sizes.



phone : 011 608 2800

email : info@ghi.co.za

website : www.ghi.co.za



ARCHITECTURAL SOLUTIONS

phone : 011 608 2800

email : info@ghi.co.za

website : www.ghi.co.za

*This drawing is presented in good faith and GHI and their Associates cannot be held liable for any errors whatsoever.
*The drawing is to be checked and sizes confirmed by Client prior to any materials ordering, cutting or manufacturing.
*Site conditions will always vary per project; this a mere standard illustration, use in conjunction with applicable site sizes.

PHOTO INSERTS:



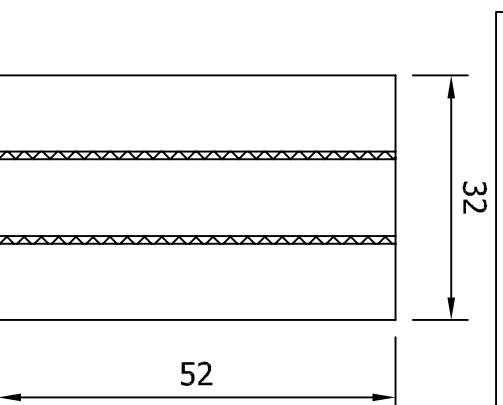
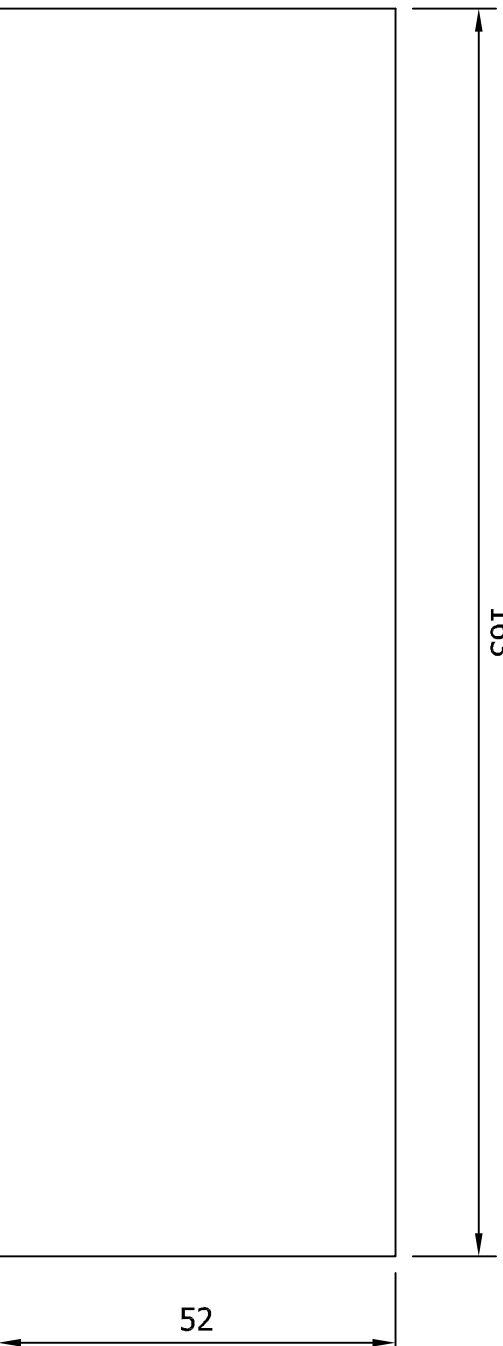
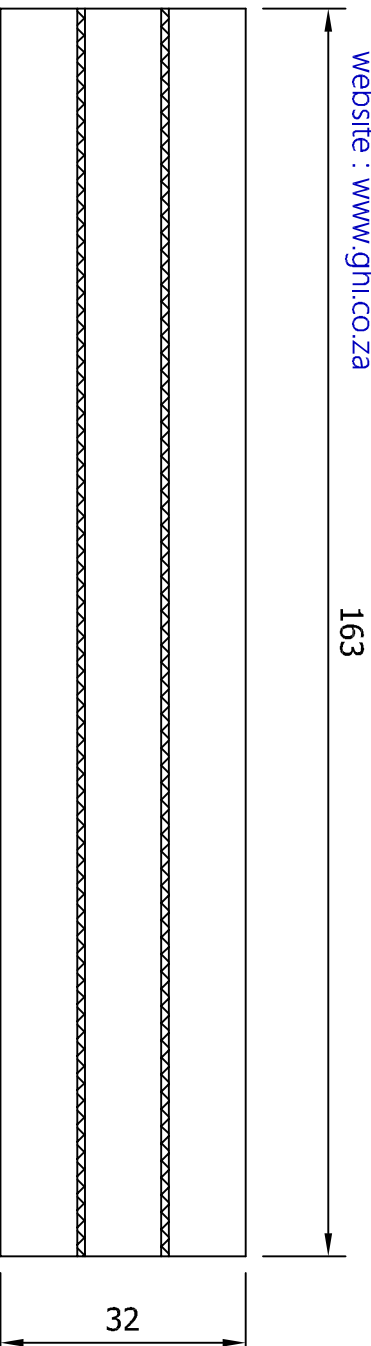
DL100



DL200



DL300



PROJECT:
SILHOUETTE PATCH FITTINGS

NOTES:
DL100/200/300 PATCH FITTINGS SIZES

DATE:
01 MARCH 2021